

VIDX SERIES

SENSOURCE VIDX SERIES PEOPLE COUNTING TECHNOLOGY



**UNMATCHED
ACCURACY**

**AI
POWERED**

**ADVANCED
FEATURES**

THE SOLUTION

HOW IT WORKS



MOST ACCURATE PEOPLE COUNTING SOLUTION

The VIDX Series boasts 97% or greater accuracy and is layered with AI to continuously improve accuracy overtime.

HOW IT WORKS

- 1. DETECT & COUNT**

.....

The VIDX Series people counting sensor uses 3D advanced stereo vision tracking technology. Artificial intelligence (AI) refines the already accurate sensing technology with a deep learning network, making it the most accurate system available.
- 2. TRANSMIT DATA**

.....

Using PoE, a single cable provides power and network connectivity. Data is processed on the sensor itself, no additional servers are needed, making real-time data available for immediate action and count lines and zones can be drawn on the sensor individually.
- 3. REPORT**

.....

Vea Analytics completes the solution, providing a cloud-based platform for analyzing and reporting traffic data. Your annual subscription also includes technical support services.



SENSOR FEATURES



Widest viewing angle on the market



Up to 8 zones per sensor



Up to 9 counting lines per sensor



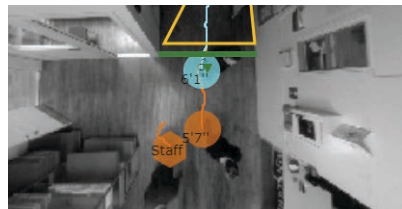
- Employee exclusion
- Group counting
- Queue detection
- Privacy filters
- Differentiate adults from children



Robust Operation

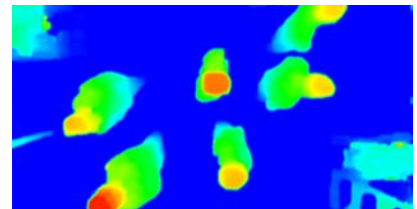
Resistant to all kinds of external influences, such as shadows, light changes and heat emission.

Up to 9 sensors can be stitched into a single view for large area monitoring.



Employee Exclusion

Take accuracy to the next level by removing employee traffic from your data set by equipping staff with specially designed tags.



Future Proof

25 year MTB. Installed sensors can be upgraded in the field with firmware upgrades and new features. Artificial intelligence lays the foundation for future concepts.

THE EXPERTISE BEHIND ACCURATE DATA



Our team of experts will custom configure the sensor settings during installation to ensure optimal accuracy. Accuracy is validated by video to meet our standards. Your sensor's health is continually monitored by our team for instances such as offline status or out of scope accuracy.

**97%+ ACCURACY
GUARANTEED**

**+ Accuracy certified by
SenSource technicians**

**+ Accuracy validated by
video**

**+ Sensors custom
configured for your facility**

**+ Ongoing sensor health &
accuracy monitoring**



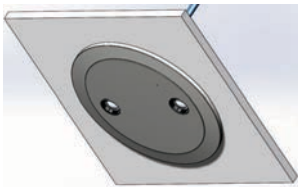
INSTALLATION SERVICES

Full installation services available for single sites as well as full rollouts. Certified technicians will run cable, install the sensor, and test for functionality and accuracy. Documentation is available for self-installation.

MOUNTING ACCESSORIES

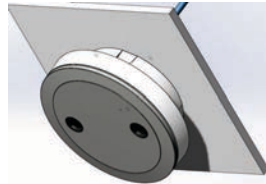
Each sensor comes with a standard mount kit that includes fasteners to mount the sensor to a drywall or acoustic/drop tile ceiling. It also includes a 1/4-20 back plate to accommodate accessory mounts or standard camera mounts.

For installations that cannot use our standard mounting kit, the below accessories are available. Request a pricing sheet.



RECESSED MOUNT

Includes a white-finished mounting box, mounting ring, and screws. Used to mount the sensor flush with a suspended ceiling.



SURFACE MOUNT

Includes white cover with three-side-breakouts for the Ethernet cable and screws. Used for concrete ceilings or when cabling can't be run above the ceiling.



OUTDOOR MODELS

Available for most VIDX models. Includes pre-assembled VIDX sensor enclosed in an outdoor-rated casing and cabling.



EXTENSION POLE

Available in 22-40" (silver or white) or 10-18" (silver). Includes extension pole with bracket and screws. Used on any ceiling or wall type to lower the sensor from the ceiling or extend the depth from a wall.



PIVOT MOUNT

Available in black or white. Includes pivot mount and screws. Used on any ceiling type, allowing to tilt the sensor in any direction.



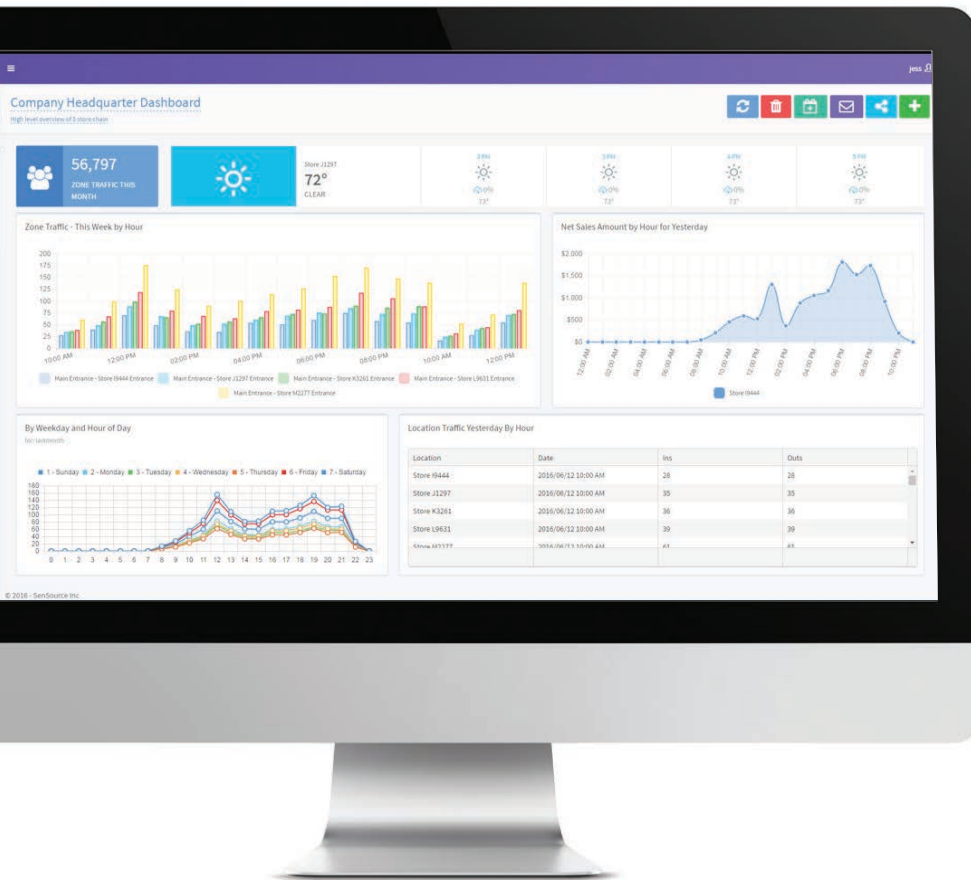
ADAPTER PLATE

Includes mounting adapter plate and screws. Used for workboxes or drop pole mount.

BLACK COVER

Black plastic cover to blend sensor to a dark ceiling.

VEA ANALYTICS PLATFORM



STANDARD FEATURES



TRAFFIC ANALYSIS
Patterns & Peak Times



PREDICTIVE TRAFFIC
Forecast Future Daily Traffic



COMPARISONS
Historical & Between Facilities



REST API
Integrate with existing systems

Vea unlocks the power of your traffic data by using visuals of performance metrics to reveal insights for data-driven decisions.

ANALYZE & REPORT

Dashboards and data grids can be shared with other Vea users, exported for further analysis, or automatically received in your inbox.

Data is hosted on our secure servers and is accessible to verified users anywhere, anytime and on any device through Vea's web login.

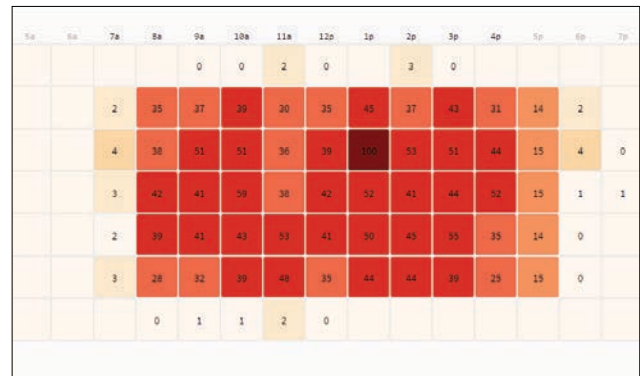
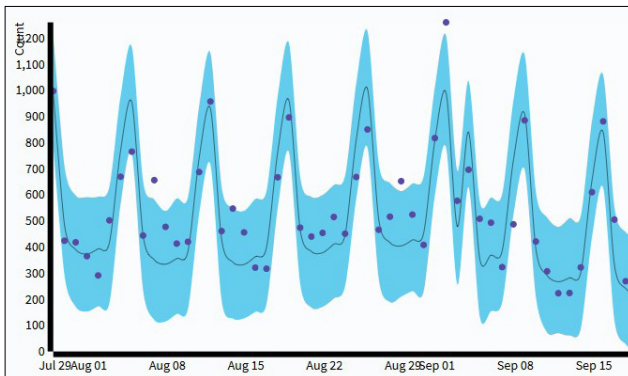
INTEGRATE

For those looking to analyze more than just traffic data, Vea also reports on occupancy metrics and retail interior metrics. See the chart to the right for included features.

A RESTful API is available for all Vea application features to integrate traffic data with your existing business software.

LEVELS TO MEET YOUR DATA ANALYSIS NEEDS

	TRAFFIC	TRAFFIC + OCCUPANCY	RETAIL ANALYTICS	INTERIOR ANALYTICS
DETAILED TRAFFIC	✓	✓	✓	
SENSOR HEALTH MONITORING	✓	✓	✓	✓
API ACCESS	✓	✓	✓	✓
OCCUPANCY		✓	✓	
POS INTEGRATION			✓	
LABOR INTEGRATION			✓	
QUEUE & ENGAGEMENT				✓
CUSTOMER JOURNEY ANALYSIS				✓



PREDICTIVE ANALYTICS

Improve operational efficiencies by knowing your facility's future traffic trends.

Ve'a's robust algorithms forecast traffic with unmatched accuracy. Forecasts are based on your historical data and automatically adapts to seasonality and trends.

VISUAL REPRESENTATIONS

Quickly see variances in metrics, reveal patterns and detect correlations using Ve'a's map features.

The day-hour heatmap reveals peak facility usage hours throughout the week. Additional visuals include geographic maps to compare multiple facilities; charts and graphs; cards and gauges.

04



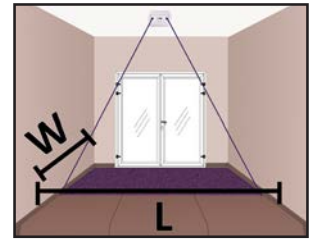
VIDX SERIES TECHNICAL SPECS

PARAMETER	
Working principle:	3D stereo vision distance measurement
Installation angle:	+/-15° in x-axis +/- 5° in y-axis
Operation temperature:	32°...113° F (0°... 45 °C)
Storage temperature:	-4° ...158 F° (-20°... 70°C)
Air humidity:	20 ... 80%
Connection:	RJ-45 Ethernet
Power supply:	PoE Class 0 (IEEE 802.3af)
Power consumption:	max 6W
Required illumination:	min. 2 lux
Data storage:	over 120 days (depending on counting elements)
Multisensor:	up to 9 sensors
Size (LxWxH):	5.12" x 3.70" x 1.18" (13.0 x 9.4 x 3.0 cm)
Weight PC2:	0.77 lbs (350gr)
Mounting height:	up to 19' 8.22" (6m)

ORDERING	
Mounting Height Range	Part Number
7.22 - 18.04 ft	PC-VIDX-S
7.22 - 11.48 ft	PC-VIDX-SUL
7.22 - 19.69 ft	PC-VIDX-SL
*Employee exclusion filter requires tighter mounting and detection area parameters. Request a data sheet.	
Vea Software - Traffic - Traffic + Occupancy - Retail Analytics - Interior Analytics	Web-based, hosted SaaS for reporting and analysis. Annual subscription includes technical support services

VIDX SERIES MOUNTING CHART

05



feet	PC-VIDX-S		PC-VIDX-SUL		PC-VIDX-SL	
	L	W	L	W	L	W
7.22	3.44	2.73	3.31	3.48	2.13	1.42
7.55	4.84	3.42	5.04	4.68	3.53	2.10
7.87	6.13	4.10	6.60	5.88	4.82	2.79
8.20	7.42	4.78	8.19	7.07	6.11	3.47
8.53	8.55	5.18	9.70	8.27	7.36	4.15
8.86	9.20	5.18	11.25	9.47	8.58	4.84
9.19	9.76	5.52	12.75	10.67	9.76	5.52
9.51	10.83	6.20	14.26	11.87	11.03	6.20
9.84	11.59	6.89	16.02	13.25	12.25	6.89
10.17	12.34	7.57	17.59	14.46	13.38	7.57
10.50	13.10	8.22	19.04	15.68	14.83	8.37
10.83	13.86	8.71	20.64	16.89	16.10	9.07
11.15	14.62	9.19	22.11	18.10	17.26	9.76
11.48	15.38	9.67	22.15	18.70	18.55	10.45
11.81	16.14	10.15			19.72	11.14
12.14	16.90	10.63			20.89	11.83
12.47	17.65	11.11			22.06	12.53
12.80	18.41	11.59			23.39	13.22
13.12	19.17	12.07			24.56	13.91
13.45	19.93	12.55			25.74	14.60
13.78	20.69	13.04			26.92	15.29
14.11	21.45	13.52			28.29	15.99
14.44	22.21	14.00			29.47	16.68
14.76	22.97	14.48			30.65	17.37
15.09	22.97	14.96			31.84	18.06
15.42	22.97	15.44			33.02	18.75
15.75	22.97	15.92			34.21	19.45
16.08	22.97	16.40			34.93	20.14
16.40	22.97	16.40			34.93	20.83
16.73	22.97	16.40			34.93	21.52
17.06	22.97	16.40			34.93	22.21
17.39	22.97	16.40			34.93	22.91
17.72	22.97	16.40			34.93	23.60
18.04	22.97	16.40			34.93	24.29
18.37	22.97	16.40			34.93	24.98
18.70	22.97	16.40			34.93	25.67
19.03	22.97	16.40			34.93	26.20
19.36	22.97	16.40			34.93	26.20
19.69	22.97	16.40			34.93	26.20